



Manual DU0

MANUAL DUO

This model has been a success since the introduction. Due to the slim design of the legs, telescopic cable management and privacy panel this desk is suitable for almost every ergonomic office environment. This model is adjustable in height by means of a hand crank.



Specifications

Leg orientation: rectangular
Height adjustable range: 670 - 1120 mm
Width adjustable range: 1150 - 1800 mm
Length bracket: 600 mm
Max. lifting capacity: 80 kg (per side)
Warranty period: 5 years
Noise Level: <45 db
Max. speed: 8 mm/turn

Colors



Related products



Single monitor arm



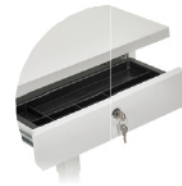
Dual monitor arm



Metal cable tray



Cable tube



Personal drawer



Metal cabinet



Wireless charger



Universal CPU holder

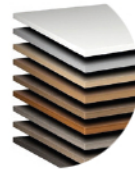


Table top



Leg cover

Product drawing

